

# MERCEDES W-123

<b>Axeltätningar/Shaft seals</b>	Art.#/part#	<b>Magnetkoppl./Clutches</b>	Art.#/part#
81-85 York	FS24019	81-85 280 York	FS47531
81-85 GM R-4	FS24016		
<b>Exp.ventiler/Exp.valves</b>	Art.#/part#	<b>Packningssatser/Gasket kits</b>	Art.#/part#
81-85	FS38602	81-85 York	FS24027
		81-85 GM R-4	FS24010
<b>Kompressorer/Compressors</b>	Art.#/part#	<b>Slangheter/Hose asy.</b>	Art.#/part#
81-85 4/5-Cyl GM R-4*	FS57225		
85-91 4/5-Cyl GM R-4**	FS57231		
81-85 280 York***	FS57064		
<b>Kondensorer/Condensers</b>	Art.#/part#	<b>Torkfilter/Driers</b>	Art.#/part#
81-85	RN14121	81-85	FS33396
<b>Kond.fläktar/Cond.fans</b>	Art.#/part#	<b>Tryckvakter/Press.switches</b>	Art.#/part#
81-85	FS36900-1	81-85 Tempgiv. torkf. / Temp sw. drier	FS35971
		81-85 Hög-låg press. / Binary switch	FS35829
<b>Kylelement/Evaporators</b>	Art.#/part#		
81-85	FS54129		
<b>Lager/Clutch bearings</b>	Art.#/part#		
81-85 York Avser / Will fit FS57064	FS47531		
81-85 GM R-4	FS25203		

**Anmärkningar/notes:**

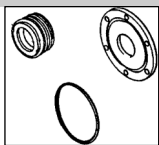
\*Tumgängor/Inchtreads

\*\*Metriskas gängor/Metric treads

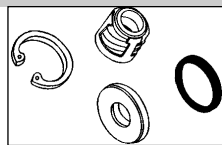
\*\*\*Utan magnetkoppling/Less clutch

# MERCEDES W-123

## Axeltätningar/Shaft seals

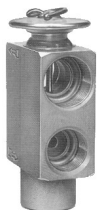


Art# FS24019



Art# FS24016

## Exp.ventiler/Exp.valves



Art# FS38602  
Org# 1238301184

## Kompressorer/Compressors



Art# FS57064  
Org#

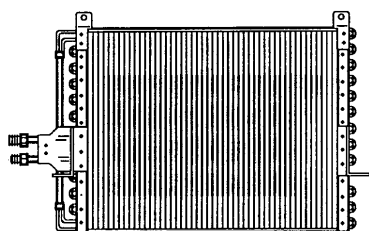


Art# FS57225  
Org#



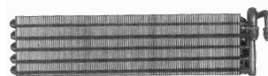
Art# FS57231  
Org#

## Kondensorer/Condensers



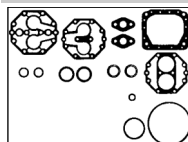
Art# RN14121  
Org# 1238300770

## Kylelement/Evaporators

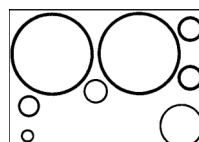


Art# FS54129  
Org# 0008304658

## Packningssatser/Gasket kits



Art# FS24027



Art# FS24010

## Slangheter/Hose asy.

## Torkfilter/Driers

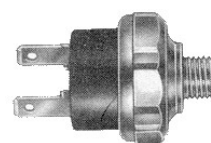


Art# FS33396  
Org# 1238300683

## Tryckvakter/Press.switches



Art# FS35971  
Org# 0008308010



Art# FS35829  
Org#