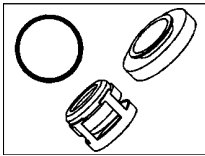


# VOLVO FL608/619

<b>Axeltätningar/Shaft seals</b>	Art.#/part#	<b>Magnetkopplingar/Clutches</b>	Art.#/part#
85-93 SD-510	FS24021		
<b>Exp.ventiler/Exp.valves</b>	Art.#/part#	<b>Packningssatser/Gasket kits</b>	Art.#/part#
85-93	FS38619	85-93 SD-510	FS24025
<b>Kompressorer/Compressors</b>	Art.#/part#	<b>Slangheter/Hose asy.</b>	Art.#/part#
85-93 SD-510 24-v	FS58526		
<b>Kondensorer/Condensers</b>	Art.#/part#	<b>Torkfilter/Driers</b>	Art.#/part#
85-93	RN10901-1	85-93	FS33901-4
<b>Kylelement/Evaporators</b>	Art.#/part#	<b>Tryckvakter/Press.switches</b>	Art.#/part#
<b>Lager/Clutch bearings</b>	Art.#/part#		
85-93 SD-510	FS25217		

# VOLVO FL608/619

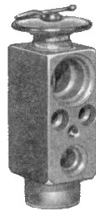
## Axeltätningar/Shaft seals



Art# FS24021

## Kylelement/Evaporators

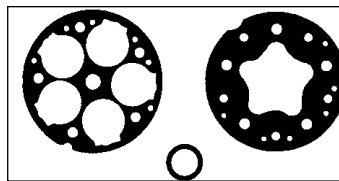
## Exp.ventiler/Exp.valves



Art# FS38619

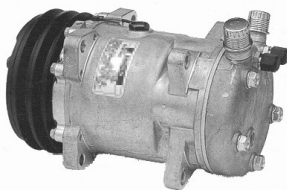
Org#

## Packningssatser/Gasket kits



Art# FS24025

## Kompressorer/Compressors



Art# FS58526

Org# 8150135

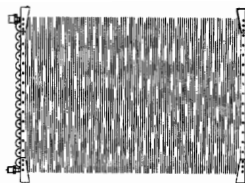
## Torkfilter/Driers



Art# FS33901-4

Org# 6775209

## Kondensorer/Condensers



Art# RN10901-1

Org# 8150138

## Tryckvakter/Press.switches