

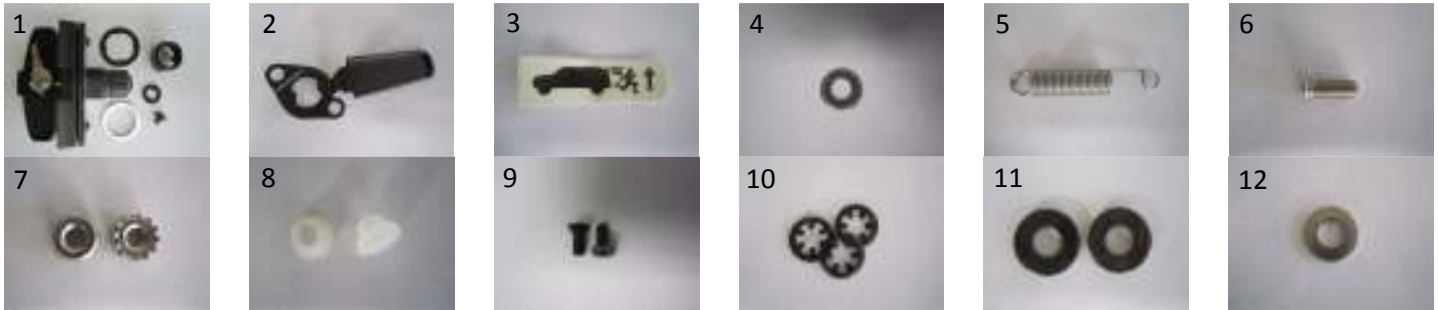
## Pro-Lock Retrofit Instruction Manual

The manual provided here lists detailed steps on the most effective way to replace your Hurd and OEM Locks with a Pro-Lock unit. The steps outlined in this procedure are broken down into the following two sections:

1. Removal of Hurd Lock or OEM Lock and handle.
2. Installation of newer Pro-Lock and handle.

Please follow these instructions to obtain the best results.

Items supplied in this retrofit kit include:



1. Pro-Lock kit.
2. Handle.
3. Handle sticker.
4. 3/16" flat washer.
5. Spring.
6. 3/16" diameter stud.
7. 10-24 x 3/8" Keps nut (x2).
8. 3/16" Nylon insert (x2).
9. 8-32 x 3/8" Phillips screw (x2).
10. Retaining ring (x2).
11. Flat washer #8 (x2).
12. 1/4" flat washer.

Tools needed for this retrofit include:

1. Screw driver (flat head & Phillips).
2. Hammer.
3. Wrench & 3/8" socket.
4. Crescent wrench.
5. 3/8" wrench.
6. 3/16" drill bit & drill (not shown).
7. Pliers (not shown).



## 1. Removal of Hurd Lock or OEM Lock and handle.



### Step 1

Locate the Hurd (A) or OEM (B) Locks and handles on the inside of your SnugTop shell.



### Step 2

Using a Phillips screw driver, unscrew the main screw to release the handle assembly. With the inside handle removed from the lock, use a set of pliers to remove the black retaining rings.



### Step 3

Release the spring from the handle and use a 3/8" socket to unscrew the Keps nuts that hold it on to the stud.



### Step 4

With a Crescent wrench, unscrew the main nut to release the lock. Be careful not to damage the paint finish on the rod cover.



### Step 5

Remove the lock mounting plate with a flat head screw driver. Care must be taken to ensure that the tailgate glass door does not get scratched or damaged.

## 2. Installation of newer Pro-Lock and handle.



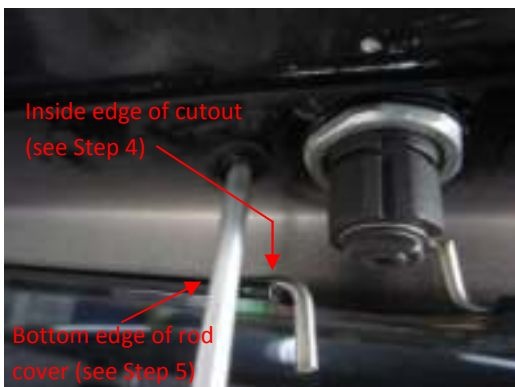
### Step 1

Remove the sticker on the back of the supplied Pro-Lock unit and place the Pro-Lock outside handle on the tailgate door with the arrows pointing downward as shown.



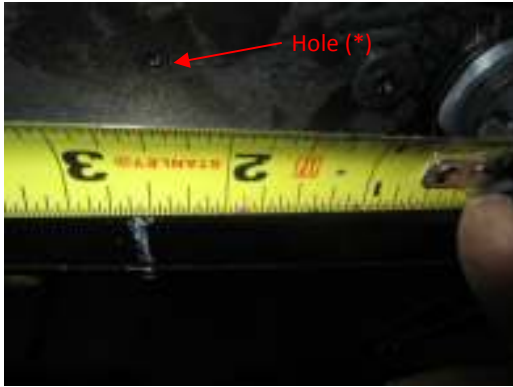
### Step 2

Install the Pro-Lock washer and main nut in the order shown.



### Step 3

Use a Crescent wrench to tighten the main nut and to hold the Pro-Lock handle in place. Be careful not to damage the paint finish on the rod cover. Use the two 3/8" screws (item #9) and their washers (item #11) to secure the Pro-Lock handle.



#### Step 4

With a non-permanent marker, mark a faint line about 2½” from the inside edge of the semi-circular cutout in the rod cover (see picture above). Please note that this marking is almost in line with the hole in the tailgate piece (see hole marked \*).



#### Step 5

On that same line, mark a faint point approximately 3/8” from the bottom edge of the rod cover (refer to picture of Step 3 for clarity).



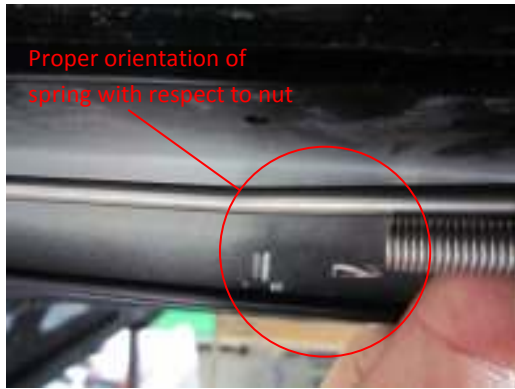
#### Step 6

Using a drill and a 3/16” diameter bit, drill a hole centered on the previously marked point. Do ensure that the drill is perpendicular to the rod cover surface. Clear the marking and any metal shavings.



#### Step 7

Align the 3/16” stud perpendicular to the rod cover surface and use a hammer to force the stud through the hole. Make sure that it does not move away from the hole center axis.



### Step 8

Once fully through, the stud will loosely fit in its hole. Secure the stud in place by using one of the Keps nuts provided, and tighten the nut with a 3/8" wrench. Be careful not to damage the paint finish on the rod cover.

Note that to correctly install the spring, the hooped end must be centered at the stud with the spring body resting above the Keps nut.



### Step 9

Install the 3/16" washer (item #4) on top of the hooped end of the spring. Secure the hooped end of the spring by installing the second Keps nut on top of the washer. Tighten fully at step 14a.



### Step 10

Install the Pro-Lock plastic cover and secure at groove.



### Step 11

Place the sticker on the handle and install the nylon inserts in their proper locations as seen here. Note that the nylon inserts are correctly positioned with their flanged ends facing the handle arm.

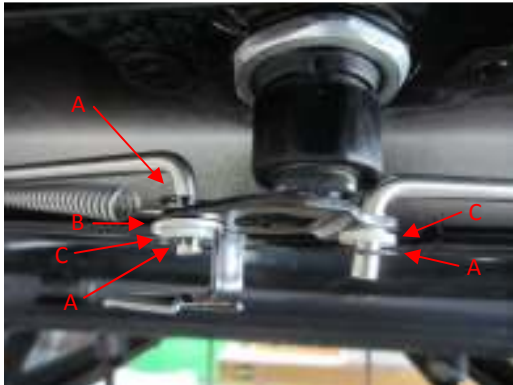
Attention: The insert closer to the handle arm requires a washer. Make sure that the flanged end of the insert and the washer are in contact (no gap). Refer to next picture.



### Step 12

Connect the extended end of the spring to the driver's side rod and mate it underneath one retaining ring. Attach the assembled handle and align the washer (and insert) with the driver's side rod. Secure in place with another retaining ring.

Attention: Handle arm should be pointing away from you.



### Step 13

Align the other side of the handle with the passenger's side rod and use a retaining ring to secure in place.

A = Retaining ring.  
B = Washer.  
C = Nylon insert.



### Step 14a

Use the slotted washer and mate it with Pro-Lock unit while turning the screw. Tighten the Keps nut at the hooped end of the spring to complete the installation.



### Step 14b

Retrofit is complete.